

BAYESIAN POLICY SELECTION USING ACTIVE INFERENCE

Ozan Çatal, Johannes Nauta, Tim Verbelen, Pieter Simoens, & Bart Dhoedt

IDLab, Department of Information Technology
Ghent University - imec
Ghent, Belgium
ozan.catal@ugent.be

ABSTRACT

Learning to take actions based on observations is a core requirement for artificial agents to be able to be successful and robust at their task. Reinforcement Learning (RL) is a well-known technique for learning such policies. However, current RL algorithms often have to deal with reward shaping, have difficulties generalizing to other environments and are most often sample inefficient. In this paper, we explore active inference and the free energy principle, a normative theory from neuroscience that explains how self-organizing biological systems operate by maintaining a model of the world and casting action selection as an inference problem. We apply this concept to a typical problem known to the RL community, the mountain car problem, and show how active inference encompasses both RL and learning from demonstrations.

1 INTRODUCTION

Active inference is an emerging paradigm from neuroscience (Friston et al., 2017), which postulates that action selection in biological systems, in particular the human brain, is in effect an inference problem where agents are attracted to a preferred prior state distribution in a hidden state space. Contrary to many state-of-the-art RL algorithms, active inference agents are not purely goal directed and exhibit an inherent epistemic exploration (Schwartenbeck et al., 2018). In neuroscience, the idea of using active inference (Friston, 2010; Friston et al., 2006) to solve different control and learning tasks has already been explored (Friston et al., 2012; 2013; 2017). These approaches however make use of manually engineered transition models and predefined, often discrete, state spaces.

In this work we make a first step towards extrapolating this inference approach to action selection by artificial agents by the use of neural networks for learning a state space, as well as models for posterior and prior beliefs over these states. We demonstrate that by minimizing the variational free energy a dynamics model can be learned from the problem environment, which is sufficient to reconstruct and predict environment observations. This dynamics model can be leveraged to perform inference on possible actions as well as to learn habitual policies.

2 ACTIVE INFERENCE & THE FREE ENERGY PRINCIPLE

Free energy is a commonly used quantity in many scientific and engineering disciplines, describing the amount of work a (thermodynamic) system can perform. Physical systems will always move towards a state of minimal free energy. In active inference the concept of variational free energy is utilized to describe the drive of organisms to self-organisation. The free energy principle states that every organism entertains an internal model of the world, and implicitly tries to minimize the difference between what it believes about the world and what it perceives, thus minimizing its own variational free energy (Friston, 2010), or alternatively the Bayesian surprise. Concretely this means that every organism or agent will actively drive itself towards preferred world states, a kind of global prior, that it believes a priori it will visit. In the context of learning to act, this surprise minimization boils down to two distinct objectives. On the one hand the agent actively samples the world to fine

arXiv:1904.08149v2 [cs.LG] 25 Apr 2019

tune its internal model of the world and better explain observations. On the other hand the agent will be driven to visit preferred states which carry little expected free energy.

Formally, an agent entertains a generative model $P(\tilde{o}, \tilde{a}, \tilde{s})$ of the environment, which specifies the joint probability of observations, actions and their hidden causes, where actions are determined by some policy π . The reader is referred to Appendix A for an overview of the used notation.

If the environment is modelled as a Markov Decision Process (MDP) this generative model factorizes as:

$$P(\tilde{o}, \tilde{a}, \tilde{s}) = P(\pi)P(s_0) \prod_{t=1}^T P(o_t|s_t)P(s_t|s_{t-1}, a_t)P(a_t|\pi) \quad (1)$$

The free energy or Bayesian surprise is then defined as:

$$\begin{aligned} F &= \mathbb{E}_Q[\log Q(\tilde{s}) - \log P(\tilde{s}, \tilde{o})] \\ &= D_{\text{KL}}(Q(\tilde{s})||P(\tilde{s}|\tilde{o})) - \log P(\tilde{o}) \\ &= D_{\text{KL}}(Q(\tilde{s})||P(\tilde{s})) - \mathbb{E}_Q[\log P(\tilde{o}|\tilde{s})] \end{aligned} \quad (2)$$

where $Q(\tilde{s})$ is an approximate posterior distribution. The second equality shows that the free energy is minimized when the KL divergence term becomes zero, meaning that the approximate posterior becomes the true posterior, in which case the free energy becomes the negative log evidence. The third equality then becomes the negative evidence lower bound (ELBO), as we know from variational autoencoders (VAE) (Kingma & Welling, 2013; Rezende et al., 2014). For a complete derivation the reader is referred to Appendix B.

In active inference agents pick actions that will result in visiting states of low expected free energy. Concretely, agents do this by sampling actions from a prior belief about policies according to how much expected free energy that policy will induce. According to Schwartenbeck et al. (2018) this means that the probability of picking a policy is given by

$$\begin{aligned} P(\pi) &= \sigma(-\gamma G(\pi)) \\ G(\pi) &= \sum_{\tau} G(\pi, \tau) \end{aligned} \quad (3)$$

where σ is the softmax function with precision parameter γ , which governs the agents goal-directedness and randomness in its behavior. G is the expected free energy at future time-step τ under policy π , which can be expanded into:

$$\begin{aligned} G(\pi, \tau) &= \mathbb{E}_{Q(o_\tau, s_\tau|\pi)}[\log Q(s_\tau|\pi) - \log P(o_\tau, s_\tau|\pi)] \\ &= \mathbb{E}_{Q(o_\tau, s_\tau|\pi)}[\log Q(s_\tau|\pi) - \log P(o_\tau|s_\tau, \pi) - \log P(s_\tau|\pi)] \\ &= D_{\text{KL}}(Q(s_\tau|\pi)||P(s_\tau)) + \mathbb{E}_{Q(s_\tau)}[H(P(o_\tau|s_\tau))] \end{aligned} \quad (4)$$

We used $Q(o_\tau, s_\tau|\pi) = P(o_\tau|s_\tau)Q(s_\tau|\pi)$ and that the prior probability $P(s_\tau|\pi)$ is given by a preferred state distribution $P(s_\tau)$. This results into two terms: a KL divergence term between the predicted states and the prior preferred states, and an entropy term reflecting the expected ambiguity under predicted states. Action selection in active inference thus entails:

1. Evaluate $G(\pi)$ for each policy π
2. Calculate the belief over policies $P(\pi)$
3. Infer the next action using $P(\pi)P(a_{t+1}|\pi)$

However, examples applying this principle are often limited to cases with a discrete number of predefined policies, as otherwise calculating $P(\pi)$ becomes intractable (Friston et al., 2017).

3 NEURAL NETWORKS AS DENSITY ESTIMATORS

In order to overcome the intractability of calculating $P(\pi)$ we characterize the approximate posterior with a neural network with parameters ϕ according to the following factorization:

$$Q(\tilde{s}) = \prod_{t=1}^T q_\phi(s_t|s_{t-1}, a_t, o_t)$$

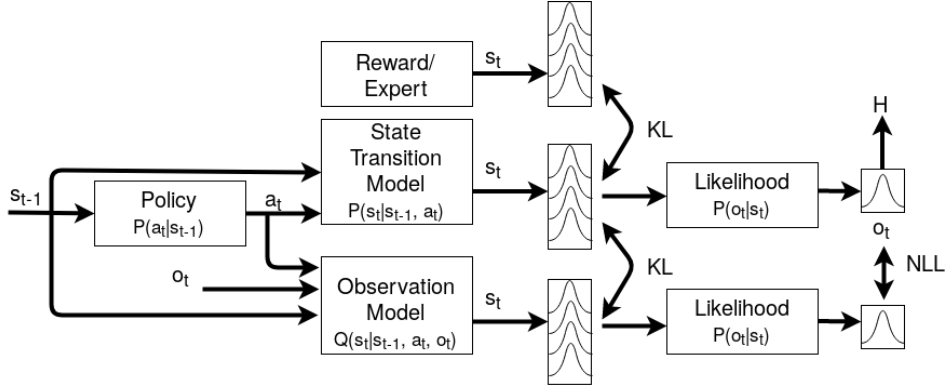


Figure 1: The various components of the agent and their corresponding training losses. We minimize the variational free energy by minimizing both the negative log likelihood of observations and the KL divergence between the state transition model and the observation model. The inferred hidden state is characterized as a multivariate Gaussian distribution. Policy learning is achieved by minimizing the expected free energy G between the state distribution visited by the policy according to the State Transition Model and the state distribution visited by the expert.

Similarly we parameterise a likelihood model $p_{\xi}(o_t | s_t)$ and dynamics model $p_{\theta}(s_t | s_{t-1}, a_{t-1})$ as neural networks with parameters ξ and θ . These networks output a multivariate Gaussian distribution with diagonal covariance matrix using the reparametrization trick from Kingma & Welling (2013).

Minimizing the free energy then boils down to minimizing the objective:

$$\forall t : \underset{\phi, \theta, \xi}{\text{minimize}} : -\log p_{\xi}(o_t | s_t) + D_{\text{KL}}(q_{\phi}(s_t | s_{t-1}, a_t, o_t) || p_{\theta}(s_t | s_{t-1}, a_t)) \quad (5)$$

The negative log likelihood term of the objective punishes reconstruction error, forcing all information from the observations into the state space. The KL term pulls the prior distribution, or the state transition model, to the posterior model, also known as the observation model, forcing it to learn to encode state distributions from which observations can be reconstructed without having actual access to these observations. This can be interpreted as a variational autoencoder (VAE), where instead of a global prior, the prior is given by the state transition model.

Action selection is then realized by using the state transition model to sample future states, given a sequence of (randomly sampled) actions. For each action sequence we evaluate G and we execute the first action of the sequence with minimal G . Any random sampling strategy can be used, for example the cross entropy method Rubinstein (1996).

The cumbersome sampling according to expected free energy can be avoided by using amortized inference. In this case we also instantiate a “habit” policy $P(a_t | s_t)$ as a neural network that maps states to actions in a deterministic or stochastic way. We can train this neural network using back propagation by minimizing G .

Crucially, we still need to define the preferred states or global prior $P(s_{\tau})$. When we have access to a reward signal, this can be converted to a preferred state prior by putting more probability density on rewarding states. Otherwise, we can initialize the system with a flat prior (each state is equally preferred), and increase the probability of rewarding states as we visit them. When we have access to an expert, we can use expert demonstrations to provide a prior on preferred states, i.e. the states visited by the expert policy. An overview of the various models and train losses is shown in Figure 1.

4 EXPERIMENTS

We validate our theoretical framework on the continuous mountain car problem from the OpenAI Gym (Brockman et al., 2016), adapted to only provide noisy observations (and no access to the velocity state). This environment, although quite simple in terms of problem complexity, proves a good initial trial problem due to greedy approaches failing at it.

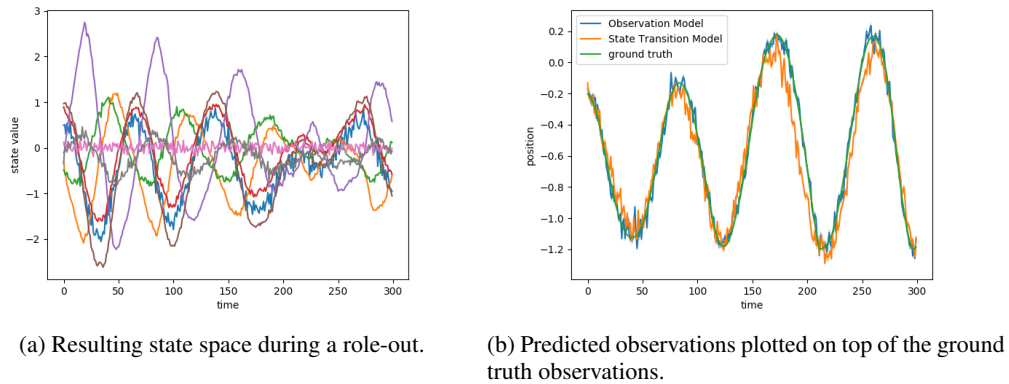


Figure 2: Results of the model training stage. In Figure (a) we see that every parameter of the eight dimensional state space encodes some element contributing to the prediction. Figure (b) shows that the models are capable of predicting ground truth observations, indicating that they accurately learned the environment dynamics.

We instantiate the state transition model, observation model and likelihood models as fully connected neural networks with 64 hidden units. The agent’s internal state is parameterised as an 8 dimensional multivariate Gaussian s . We bootstrap the model by training on a random agent and optimizing Eq. 5. Our random agent samples actions uniformly in $[-1, 1]$, with a 90% chance of repeating the previous action. Figure 2a shows a plot of the means of the internal states during a random rollout, whilst Figure 2b shows reconstructions from both the state transition model and observation model from the same rollout. Note that the state transition model has no access to any observations. The closeness between ground truth observations and state transition model reconstructions illustrates that the agent has successfully learned an internal world representation sufficient to predict the world evolution from a single initial observation.

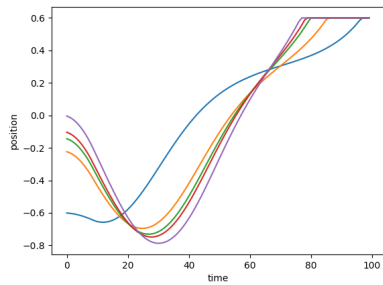
To construct a preferred state prior, we manually execute 5 “expert rollouts” in the environment. These rollouts can be seen in Figure 3a. From these rollouts a preferred state distribution is extracted (Figure 3b). You can see that in the beginning of the sequence, there is a variance on the preferred states, whereas towards the end the preferred state distribution is peaked around the state reflecting the car being on the top of the mountain. This is equivalent with a sparse reward signal when reaching the mountain top at the end of the sequence. Similarly, one can also engineer a preferred state prior based on the reward signal, which we discuss in Appendix C

We now use this state policy for action selection according the active inference scheme. We sample random rollouts using the state transition model and calculate the expected free energy G for each. This indeed selects rollouts that successfully reach the mountain top as shown in Figure 3c. Next, we also train a policy by minimizing G at every timestep as defined in Eq 4. After training, this policy is indeed able to generalize to any starting position, consistently reaching the mountain top.

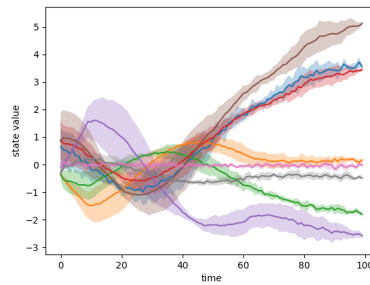
5 RELATED WORK

Model-free RL has been successfully proven to work on many game playing (Silver et al., 2016; Hessel et al., 2017) and robotics problems (Yahya et al., 2017; Kalashnikov et al., 2018). However, there are still some outstanding challenges, such as the issue of reward engineering (Popov et al., 2017), generalizing to other environments (Lanctot et al., 2017), and sample inefficiency (Yu, 2018).

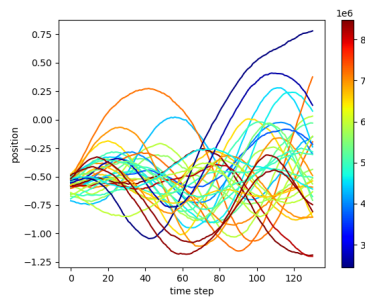
Recently there have been promising advancements in the area of model-based RL. Ha et al. Ha & Schmidhuber (2018) train a variational autoencoder (VAE) in conjunction with a recurrent dynamics model to create a predictive world model. They use this predictive model to train a controller using evolution strategies (Salimans et al., 2017). Steven Bohez (2018) train jointly a prior and posterior model for a robotics navigation task. In MERLIN (Wayne et al., 2018), a neural memory module



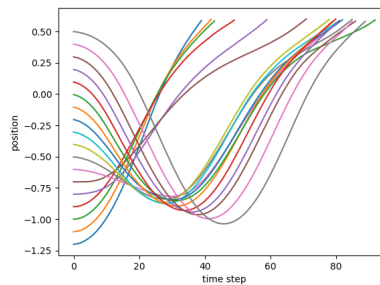
(a) Expert roll-outs from 5 different start positions.



(b) Preferred state distribution from expert roll-outs. Each curve indicates the distribution of a latent dimension during rollout.



(c) Random imaginary rollouts with expected free energy G , represented in the color bar. Lower G is better.



(d) Actual policy rollouts with different starting positions.

Figure 3: Results of the policy learning. From expert rollouts (a) we distill a preferred state distribution (b). Sampling imaginary rollouts of the state transition model results in better rollouts having lower expected free energy G (c). We can use this sampling to train an amortized active inference policy that successfully solves the environment from any starting position (d).

is added on top of a VAE based dynamics model to facilitate learning policies over longer time windows. In a similar vein (Srinivas et al., 2018) learns abstract representation for planning.

Instead of using an explicit reward signal, policies can also be learned from demonstrations using inverse reinforcement learning, basically learning a reward signal from an expert (Ng & Russell, 2000). Another approach for learning from demonstrations is using meta-learning to quickly distill a policy from a new demonstration (Finn et al., 2017).

Active inference combines elements of all these works into a single theoretical framework. The preferred states prior can be interpreted as more generic form of value function in RL. It combines learning world models with action selection and planning. Also, the concept of minimizing expected Bayesian surprise resembles the work on artificial curiosity for exploration (Graziano et al., 2011).

6 CONCLUSION

Active inference might underlie the way biological agents perceive and interact with the world. In this work we show that active inference and the free energy principle can also help artificial agents interact with the world. Active inference also combines a lot of elements from recent RL literature, such as building world models, neural planning, artificial curiosity, etc. We believe this is an interesting direction for further research, to apply this principle to more challenging environments, such as the ATARI domain or robotics.

ACKNOWLEDGMENTS

Ozan Catal is funded by a Ph.D. grant of the Flanders Research Foundation (FWO).

REFERENCES

- Greg Brockman, Vicki Cheung, Ludwig Pettersson, Jonas Schneider, John Schulman, Jie Tang, and Wojciech Zaremba. Openai gym. *CoRR*, abs/1606.01540, 2016. URL <http://arxiv.org/abs/1606.01540>.
- Chelsea Finn, Tianhe Yu, Tianhao Zhang, Pieter Abbeel, and Sergey Levine. One-shot visual imitation learning via meta-learning. *CoRR*, abs/1709.04905, 2017. URL <http://arxiv.org/abs/1709.04905>.
- Karl Friston. The free-energy principle: A unified brain theory? *Nature Reviews Neuroscience*, 11(2):127–138, 2010. ISSN 1471003X. doi: 10.1038/nrn2787. URL <http://dx.doi.org/10.1038/nrn2787>.
- Karl Friston, James Kilner, and Lee Harrison. A free energy principle for the brain. *Journal of Physiology Paris*, 100(1-3):70–87, 2006. ISSN 09284257. doi: 10.1016/j.jphysparis.2006.10.001.
- Karl Friston, Spyridon Samothrakis, and Read Montague. Active inference and agency: Optimal control without cost functions. *Biological Cybernetics*, 106(8-9):523–541, 2012. ISSN 03401200. doi: 10.1007/s00422-012-0512-8.
- Karl Friston, Philipp Schwartenbeck, Thomas FitzGerald, Michael Moutoussis, Timothy Behrens, and Raymond J. Dolan. The anatomy of choice: active inference and agency. *Frontiers in Human Neuroscience*, 7(September):1–18, 2013. ISSN 1662-5161. doi: 10.3389/fnhum.2013.00598. URL <http://journal.frontiersin.org/article/10.3389/fnhum.2013.00598/abstract>.
- Karl Friston, Thomas FitzGerald, Francesco Rigoli, Philipp Schwartenbeck, and Giovanni Pezzulo. Active inference: A Process Theory. *Neural Computation*, 29:1–49, 2017. ISSN 1530888X. doi: 10.1162/NECO.a.00912.
- Vincent Graziano, Tobias Glasmachers, Tom Schaul, Leo Pape, Giuseppe Cuccu, Juxi Leitner, and Jrgen Schmidhuber. Artificial curiosity for autonomous space exploration. *Acta Futura*, pp. 41–51, 01 2011.
- David Ha and Jürgen Schmidhuber. World Models. *arXiv preprint*, 2018. doi: 10.5281/zenodo.1207631. URL <http://arxiv.org/abs/1803.10122>{%}0A<http://dx.doi.org/10.5281/zenodo.1207631>.
- Matteo Hessel, Joseph Modayil, Hado van Hasselt, Tom Schaul, Georg Ostrovski, Will Dabney, Dan Horgan, Bilal Piot, Mohammad Azar, and David Silver. Rainbow: Combining Improvements in Deep Reinforcement Learning. *arXiv preprint*, 2017. URL <http://arxiv.org/abs/1710.02298>.
- Dmitry Kalashnikov, Alex Irpan, Peter Pastor, Julian Ibarz, Alexander Herzog, Eric Jang, Deirdre Quillen, Ethan Holly, Mrinal Kalakrishnan, Vincent Vanhoucke, and Sergey Levine. Qt-opt: Scalable deep reinforcement learning for vision-based robotic manipulation. *CoRR*, abs/1806.10293, 2018. URL <http://arxiv.org/abs/1806.10293>.
- Diederik P. Kingma and Max Welling. Auto-encoding variational bayes. *CoRR*, abs/1312.6114, 2013. URL <http://arxiv.org/abs/1312.6114>.
- Marc Lanctot, Vinícius Flores Zambaldi, Audrunas Gruslys, Angeliki Lazaridou, Karl Tuyls, Julien Pérolat, David Silver, and Thore Graepel. A unified game-theoretic approach to multiagent reinforcement learning. *CoRR*, abs/1711.00832, 2017. URL <http://arxiv.org/abs/1711.00832>.

- Andrew Y. Ng and Stuart J. Russell. Algorithms for inverse reinforcement learning. In *Proceedings of the Seventeenth International Conference on Machine Learning*, ICML '00, pp. 663–670, San Francisco, CA, USA, 2000. Morgan Kaufmann Publishers Inc. ISBN 1-55860-707-2. URL <http://dl.acm.org/citation.cfm?id=645529.657801>.
- Ivaylo Popov, Nicolas Heess, Timothy P. Lillicrap, Roland Hafner, Gabriel Barth-Maron, Matej Vecerik, Thomas Lampe, Yuval Tassa, Tom Erez, and Martin A. Riedmiller. Data-efficient deep reinforcement learning for dexterous manipulation. *CoRR*, abs/1704.03073, 2017. URL <http://arxiv.org/abs/1704.03073>.
- Danilo Jimenez Rezende, Shakir Mohamed, and Daan Wierstra. Stochastic backpropagation and approximate inference in deep generative models. In Eric P. Xing and Tony Jebara (eds.), *Proceedings of the 31st International Conference on Machine Learning*, volume 32 of *Proceedings of Machine Learning Research*, pp. 1278–1286, Beijing, China, 22–24 Jun 2014. PMLR. URL <http://proceedings.mlr.press/v32/rezende14.html>.
- Reuven Y. Rubinstein. Optimization of computer simulation models with rare events. *European Journal of Operations Research*, 99:89–112, 1996.
- Tim Salimans, Jonathan Ho, Xi Chen, Szymon Sidor, and Ilya Sutskever. Evolution Strategies as a Scalable Alternative to Reinforcement Learning. *arXiv preprint*, pp. 1–13, 2017. ISSN 1744-4292. doi: 10.1.1.51.6328. URL <http://arxiv.org/abs/1703.03864>.
- Philipp Schwartenbeck, Johannes Passecker, Tobias Hauser, Thomas H B FitzGerald, Martin Kronbichler, and Karl J Friston. Computational mechanisms of curiosity and goal-directed exploration. *bioRxiv*, pp. 411272, 2018. doi: 10.1101/411272. URL <https://www.biorxiv.org/content/early/2018/09/07/411272>.
- David Silver, Aja Huang, Chris J. Maddison, Arthur Guez, Laurent Sifre, George Van Den Driessche, Julian Schrittwieser, Ioannis Antonoglou, Veda Panneershelvam, Marc Lanctot, Sander Dieleman, Dominik Grewe, John Nham, Nal Kalchbrenner, Ilya Sutskever, Timothy Lillicrap, Madeleine Leach, Koray Kavukcuoglu, Thore Graepel, and Demis Hassabis. Mastering the game of Go with deep neural networks and tree search. *Nature*, 529(7587):484–489, 2016. ISSN 14764687. doi: 10.1038/nature16961.
- Aravind Srinivas, Allan Jabri, Pieter Abbeel, Sergey Levine, and Chelsea Finn. Universal Planning Networks. *Proceedings of the 35th International Conference on Machine Learning*, Stockholm, Sweden, PMLR, 2018. ISSN 1938-7228. URL <http://arxiv.org/abs/1804.00645>.
- Sam Leroux Elias De Coninck Bert Vankeirsbilck Pieter Simoens Bart Dhoedt Steven Bohez, Tim Verbelen. Robot navigation using a variational dynamics model for state estimation and robust control. In *Deep RL workshop NeurIPS 2018*, December 2018.
- Greg Wayne, Chia-Chun Hung, David Amos, Mehdi Mirza, Arun Ahuja, Agnieszka Grabska-Barwinska, Jack Rae, Piotr Mirowski, Joel Z. Leibo, Adam Santoro, Mevlana Gemici, Malcolm Reynolds, Tim Harley, Josh Abramson, Shakir Mohamed, Danilo Rezende, David Saxton, Adam Cain, Chloe Hillier, David Silver, Koray Kavukcuoglu, Matt Botvinick, Demis Hassabis, and Timothy Lillicrap. Unsupervised Predictive Memory in a Goal-Directed Agent. *arXiv preprint*, 2018. URL <http://arxiv.org/abs/1803.10760>.
- Ali Yahya, Adrian Li, Mrinal Kalakrishnan, Yevgen Chebotar, and Sergey Levine. Collective robot reinforcement learning with distributed asynchronous guided policy search. In *IEEE International Conference on Intelligent Robots and Systems*, volume 2017-Septe, pp. 79–86, 2017. ISBN 9781538626825. doi: 10.1109/IROS.2017.8202141.
- Yang Yu. Towards sample efficient reinforcement learning. In *Proceedings of the Twenty-Seventh International Joint Conference on Artificial Intelligence, IJCAI-18*, pp. 5739–5743. International Joint Conferences on Artificial Intelligence Organization, 7 2018. doi: 10.24963/ijcai.2018/820. URL <https://doi.org/10.24963/ijcai.2018/820>.

Appendices

A GLOSSARY

Definition	Description
\mathbf{s}_t	State at time t
\mathbf{o}_t	Observation at time t
\mathbf{a}_t	Action at time t
\mathbf{s}_τ	Expected state at a future timestep τ
$\tilde{\mathbf{s}}$	Sequence of states
$\tilde{\mathbf{o}}$	Sequence of observations
$\tilde{\mathbf{a}}$	Sequence of actions
$P(\tilde{\mathbf{o}}, \tilde{\mathbf{a}}, \tilde{\mathbf{s}})$	Generative model of the agent
$P(\mathbf{o}_t \mathbf{s}_t)$	Likelihood model
π	Policy
$P(\mathbf{s}_t \mathbf{s}_{t-1}, \mathbf{a}_{t-1})$	State transition model
$P(\mathbf{a}_t \pi)$	Action at time t given a policy
$P(\pi)$	Belief over policies
$P(\tilde{\mathbf{s}} \tilde{\mathbf{o}})$	True posterior about hidden states given a sequence of observations
$Q(\tilde{\mathbf{s}})$	Approximate posterior about hidden states
$F = \mathbb{E}_{Q(\mathbf{s})}[\log Q(\tilde{\mathbf{s}}) - \log P(\tilde{\mathbf{s}}, \tilde{\mathbf{o}})]$	Free energy
$G(\cdot)$	Expected free energy
$\sigma(\mathbf{z})_j = e^{z_j} / \sum_k e^{z_k}$	Softmax or Boltzmann distribution
γ	Precision parameter governing goal-directedness and randomness

Table 1: Glossary table with brief description of the used terms and their definitions

B FREE ENERGY DERIVATION

Starting from the definition of free energy:

$$F = \mathbb{E}_Q[\log Q(\tilde{\mathbf{s}}) - \log P(\tilde{\mathbf{s}}, \tilde{\mathbf{o}})]$$

where $Q(\tilde{\mathbf{x}})$ is an approximate posterior distribution. We can expand the free energy F as follows:

$$\begin{aligned} F &= \mathbb{E}_Q[\log Q(\tilde{\mathbf{s}}) - \log P(\tilde{\mathbf{s}}, \tilde{\mathbf{o}})] \\ &= \mathbb{E}_Q[\log Q(\tilde{\mathbf{s}}) - \log P(\tilde{\mathbf{s}}|\tilde{\mathbf{o}}) - \log P(\tilde{\mathbf{o}})] \\ &= D_{\text{KL}}(Q(\tilde{\mathbf{s}})\|P(\tilde{\mathbf{x}}|\tilde{\mathbf{o}})) - \log P(\tilde{\mathbf{o}}), \end{aligned}$$

Similarly, we can also rewrite the free energy expression as:

$$\begin{aligned} F &= \mathbb{E}_Q[\log Q(\tilde{\mathbf{s}}) - \log P(\tilde{\mathbf{s}}, \tilde{\mathbf{o}})] \\ &\quad \text{using the identity } P(\tilde{\mathbf{s}}, \tilde{\mathbf{o}}) = P(\tilde{\mathbf{o}}|\tilde{\mathbf{s}})P(\tilde{\mathbf{s}}) \\ &= \mathbb{E}_Q[\log Q(\tilde{\mathbf{s}}) - \log P(\tilde{\mathbf{s}}) - \log P(\tilde{\mathbf{o}}|\tilde{\mathbf{s}})] \\ &= D_{\text{KL}}(Q(\tilde{\mathbf{s}})\|P(\tilde{\mathbf{s}})) - \mathbb{E}_Q[\log P(\tilde{\mathbf{o}}|\tilde{\mathbf{s}})] \end{aligned}$$

C A REWARD-BASED PREFERRED STATE PRIOR

In a traditional RL setting, an agent only has access to a reward signal, rather than expert demonstrations. In this case the agent will need to find the preferred state prior that matches the reward signal (higher probability for states that yield higher reward), which is equivalent to learning a value function $V(\cdot)$ in RL. In the mountain car problem, only a sparse reward of +1 is given when reaching the top of the mountain. Based on this reward function, we can define the preferred state distribution as a Gaussian centered around the states where the car reaches the top of the mountain after timestep 100. We can use this prior instead of the one induced by the demonstrations for active inference. We see in Figure 4 that again trajectories reaching the top result in the lowest expected free energy.

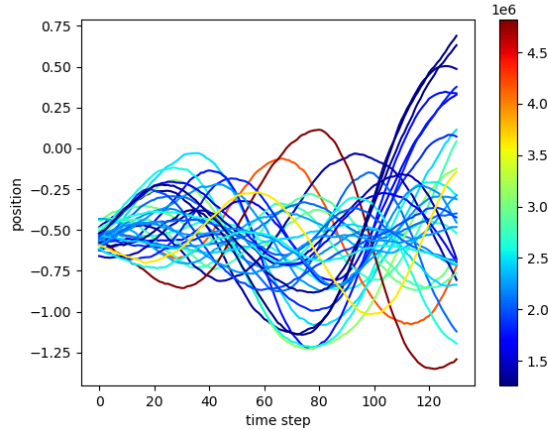


Figure 4: Random imaginary rollouts with corresponding expected free energy G when the preferred state is defined as those states that give reward. Lower G is better.